

Welcome to SLAC

US Higgs Factory Planning Meeting

12/19 to 12/20

Charlie Young



**B48 1st floor
Redwood Room A/B/C/D**

**B51
Kavli Auditorium**

**B49
Guest House**

**B47
Verve kiosk**

**B53
Trinity A/B 1st floor
Berryessa 2nd floor
Havasu 3rd floor
Toluca 4th floor
Tulare 4th floor**

SL

200 ft

US Higgs Factory Planning

19–20 Dec 2024

SLAC

America/Los_Angeles timezone

Enter your search term



Overview

Timetable

Participant List

Hotel Accommodation

Registration

Coming to SLAC

COVID Protocol

Wifi Information

Land Acknowledgement

Code of Conduct

Zoom Info

Dinner and Lunches info

Note that the workshop is **Dec. 19-20** (and not 18-19 as some emails may have stated).

The workshop has the following purpose:

- 1) Discussion of the near term needs for detector R&D and software development
- 2) initial discussion on the U.S. HFCC input to ESPP, both technical and strategic.
- 3) discussion on US expression of interest to international partners.



Starts 19 Dec 2024, 08:00

Ends 20 Dec 2024, 17:00

America/Los_Angeles



SLAC

51/1-102 - Kavli Auditorium



There are no materials yet.



Registration

You are registered for this event.

97

[See details >](#)

SLAC Covid-19 Information ([URL](#))

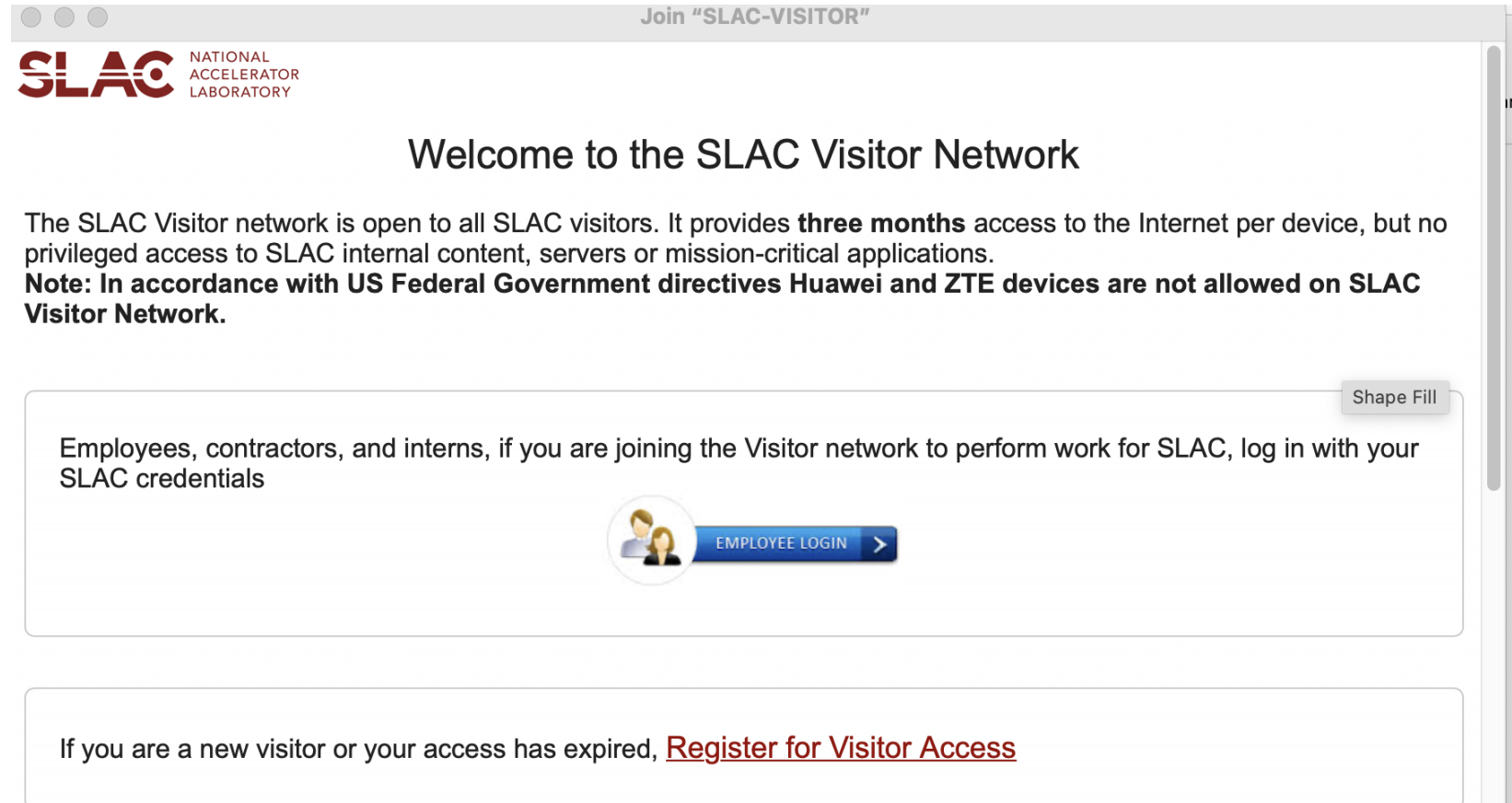
Travel Guidance

If you are coming to SLAC from domestic travel, no additional health check-in is required. Just follow the general respiratory virus [link](#) prevention guidance ↗ from the CDC . If you do feel sick, please [link](#) report on Health Check ↗ and follow any directions received. If you test positive for COVID, do not come on site.

For higher-risk travel, such as international travel or travelling from densely-populated areas, you should mask if you begin to feel sick, even if you test negative for COVID.

Networks

- SLAC – SLAC managed computers only
- SLAC-VISITOR
- Eduroam



The screenshot shows a web browser window titled "Join 'SLAC-VISITOR'". The SLAC logo (National Accelerator Laboratory) is in the top left. The main heading is "Welcome to the SLAC Visitor Network". Below it, a paragraph states: "The SLAC Visitor network is open to all SLAC visitors. It provides **three months** access to the Internet per device, but no privileged access to SLAC internal content, servers or mission-critical applications." A bold note follows: "Note: In accordance with US Federal Government directives Huawei and ZTE devices are not allowed on SLAC Visitor Network." There are two main content boxes. The first box contains the text: "Employees, contractors, and interns, if you are joining the Visitor network to perform work for SLAC, log in with your SLAC credentials" and a button labeled "EMPLOYEE LOGIN" with a right-pointing arrow and a small icon of two people. The second box contains the text: "If you are a new visitor or your access has expired, [Register for Visitor Access](#)".

Join "SLAC-VISITOR"


SLAC NATIONAL ACCELERATOR LABORATORY

Welcome to the SLAC Visitor Network

The SLAC Visitor network is open to all SLAC visitors. It provides **three months** access to the Internet per device, but no privileged access to SLAC internal content, servers or mission-critical applications.

Note: In accordance with US Federal Government directives Huawei and ZTE devices are not allowed on SLAC Visitor Network.

Employees, contractors, and interns, if you are joining the Visitor network to perform work for SLAC, log in with your SLAC credentials

 EMPLOYEE LOGIN >

If you are a new visitor or your access has expired, [Register for Visitor Access](#)

Land Acknowledgement ([URL](#))

Stanford's Land Acknowledgment Statement

“Stanford sits on the ancestral land of the Muwekma Ohlone Tribe. This land was and continues to be of great importance to the Ohlone people. Consistent with our values of community and inclusion, we have a responsibility to acknowledge, honor, and make visible the University’s relationship to Native peoples.”

This acknowledgment has been developed in collaboration with the Muwekma Ohlone Tribe.

Code of Conduct ([URL](#))

Events at the US ATLAS Center at SLAC are community events intended for networking and collaboration as well as learning. We value the participation of every member and want all attendees to have an enjoyable and fulfilling experience. Accordingly, all attendees are expected to show respect and courtesy to other attendees and to abide by the following Code of Conduct. Any issues can be brought to the confidential attention of the organizers and we thank you for helping make these events welcoming and friendly event.

CODE OF CONDUCT

The community of participants of the events at the US ATLAS Center is made up of members from around the globe with a diverse set of skills, personalities, and experiences. It is through these differences that our community experiences success and continued growth. We expect everyone in our community to follow these guidelines when interacting with others both inside and outside of our community. Our goal is to keep ours a positive, inclusive, successful, and growing community.

As members of the community,

- We pledge to treat all people with respect and provide a harassment- and bullying-free environment, regardless of sex, sexual orientation and/or gender identity, disability, physical appearance, body size, race, nationality, ethnicity, and religion. In particular, sexual language and imagery, sexist, racist, or otherwise exclusionary jokes are not appropriate.
- We pledge to respect the work of others by recognizing acknowledgment/citation requests of original authors. As authors, we pledge to be explicit about how we want our own work to be cited or acknowledged.
- We pledge to welcome those interested in joining the community, and realize that including people with a variety of opinions and backgrounds will only serve to enrich our community. In particular, discussions relating to pros/cons of various technologies, programming languages, and so on are welcome, but these should be done with respect, taking proactive measure to ensure that all participants are heard and feel confident that they can freely express their opinions.
- We pledge to welcome questions and answer them respectfully, paying particular attention to those new to the community.
- We pledge to be conscientious of the perceptions of the wider community and to respond to criticism respectfully. We will strive to model behaviors that encourage productive debate and disagreement, both within our community and where we are criticized. We will treat those outside our community with the same respect as people within our community.
- We pledge to help the entire community follow the code of conduct, and to not remain silent when we see violations of the code of conduct. We will take action when members of our community violate this code such as notifying a workshop organizer or talking privately with the person.

This code of conduct applies to all community situations online and offline, including the meetings themselves, mailing lists, forums, social media, social events associated with the conference, and one-to-one interactions.

Participants asked to stop any harassing behavior are expected to comply immediately. Attendees violating these rules may be asked to leave the event at the sole discretion of the organizers.

This code of conduct has been adapted from the [Python in Astronomy Code of Conduct](#).

Lunch and Dinner



Caterina Vernieri

@Caterina-Vernieri

SLAC Café is closed.

Lunch

- Many have signed up for sandwich from Eric's Gourmet
 - Delivered to Auditorium lobby
 - \$20/day. Please pay Caterina now – cash or Venmo
- Drinks and some food items available in Verve kiosk (next to Guest House)
- Contact us if you need other options

Dinner – 6:30 this evening

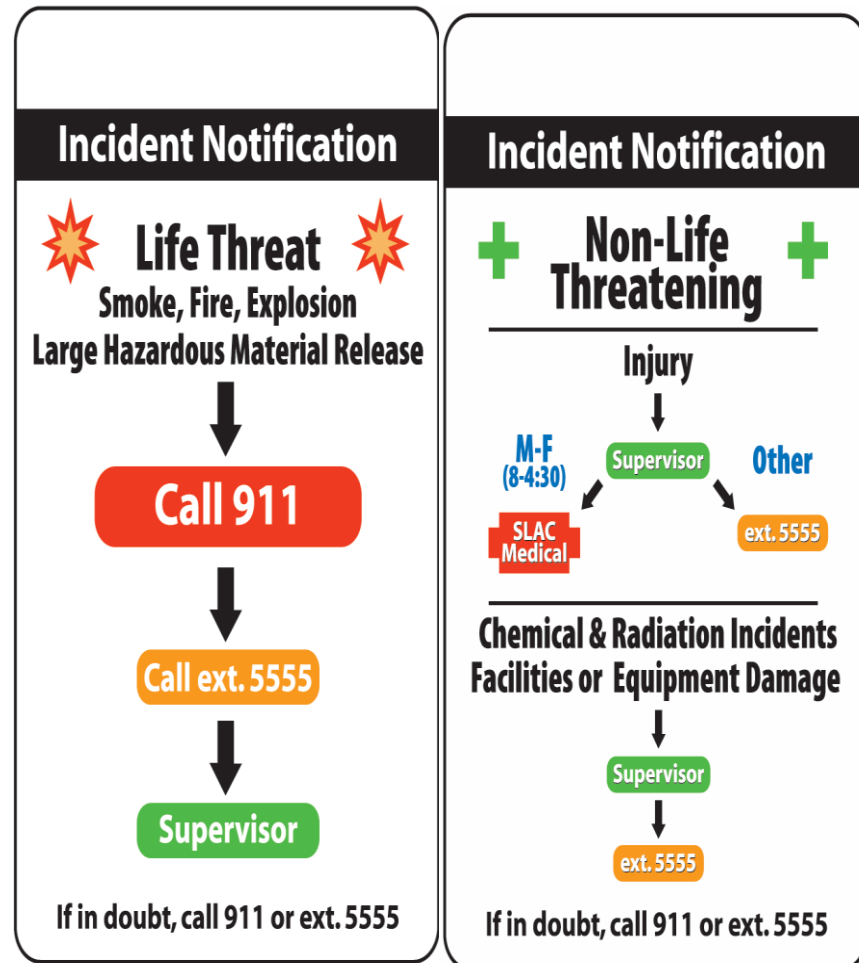
- At Trellis Restaurant ([link](#))
 - \$55. Please pay Caterina now – cash or Venmo
 - Cash bar
 - 1077 El Camino Real, Menlo Park, CA 94025; (650) 326 9028



venmo

Scan this code to pay

In Case of Emergency



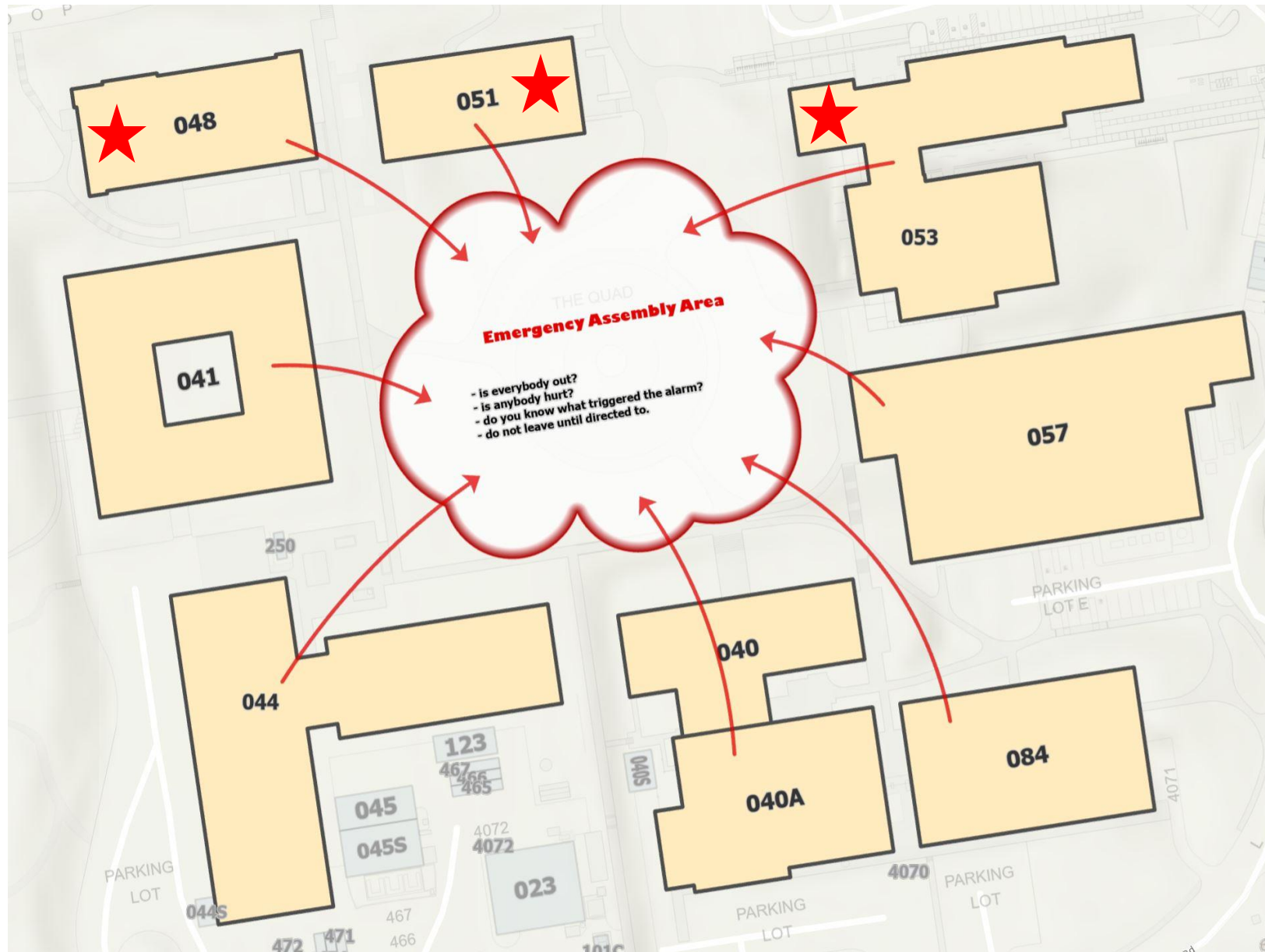
Fire

- Evacuate. Be aware of building exits
- Follow building residents to the **assembly area**
- Do not leave until you are accounted for and have been instructed to leave.

Earthquake

- Remain in building: Duck, cover, and hold position
- When shaking stops: Evacuate building via a safe route to the **assembly area**
- Do not leave until you are accounted for and have been instructed to leave.

Assembly Area



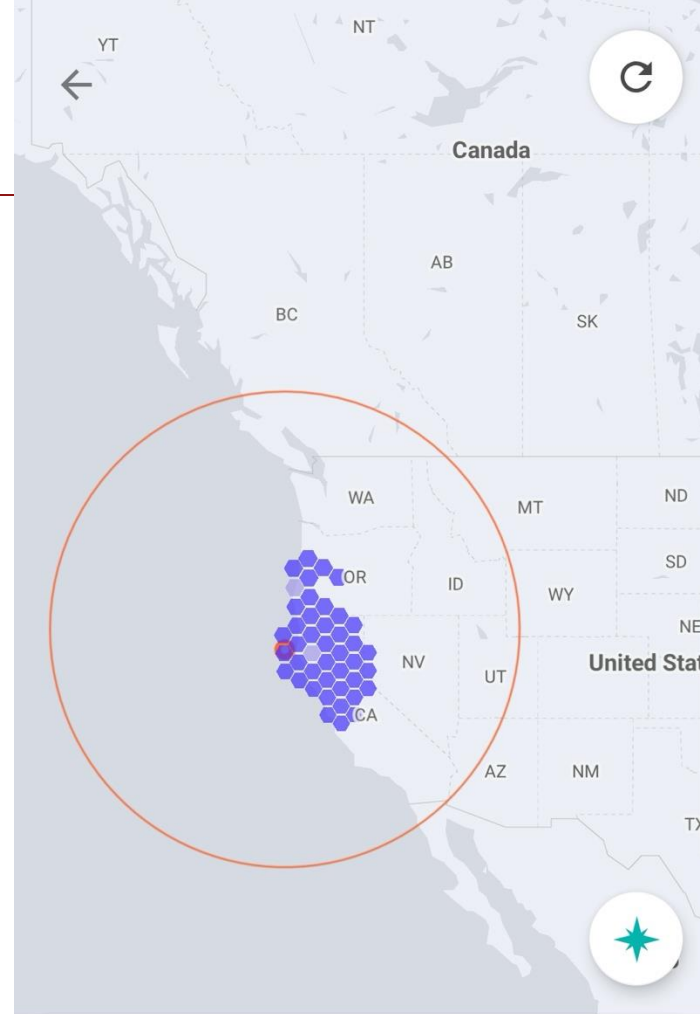
December 5, 2024

10:44 All phones received earthquake warning.

Noticed (mild) shaking ~ minute later.

- Cape Mendocino is ~300 miles North of SLAC

10:51 Phones received tsunami warning.



2024 Offshore Cape Mendocino, California Earthquake

Dec 5, 10:44 AM

Share your experience

10:51

The National Weather Service has issued a TSUNAMI WARNING. A series of powerful waves and strong currents may impact coasts near you. You are in danger. Get away from coastal waters. Move to high ground or inland now. Keep away from the coast until local officials say it is safe to return.

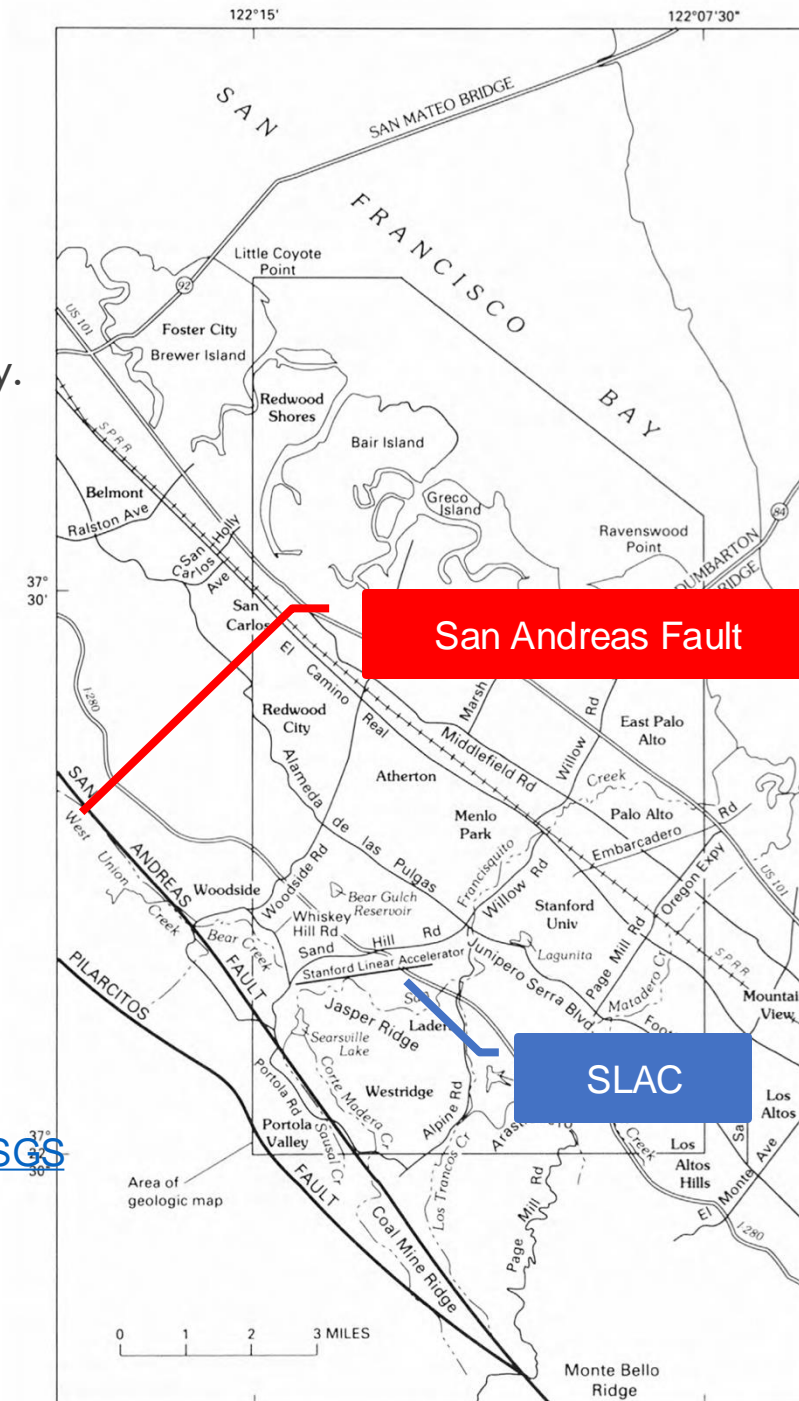
10:51

San Andreas Fault

Closest portion of San Andreas fault is just a few miles away.

Warning time can be much shorter.

And shaking can be much more severe.



[Map from USGS](#)

Thank You!

Adrienne Higashi and Glenna Paige & the SLAC AV Team:
for their support especially on the eve of the winter break.

All of you:
for coming to this meeting, again especially with the holidays coming up.

Welcome to SLAC

Have a great meeting
