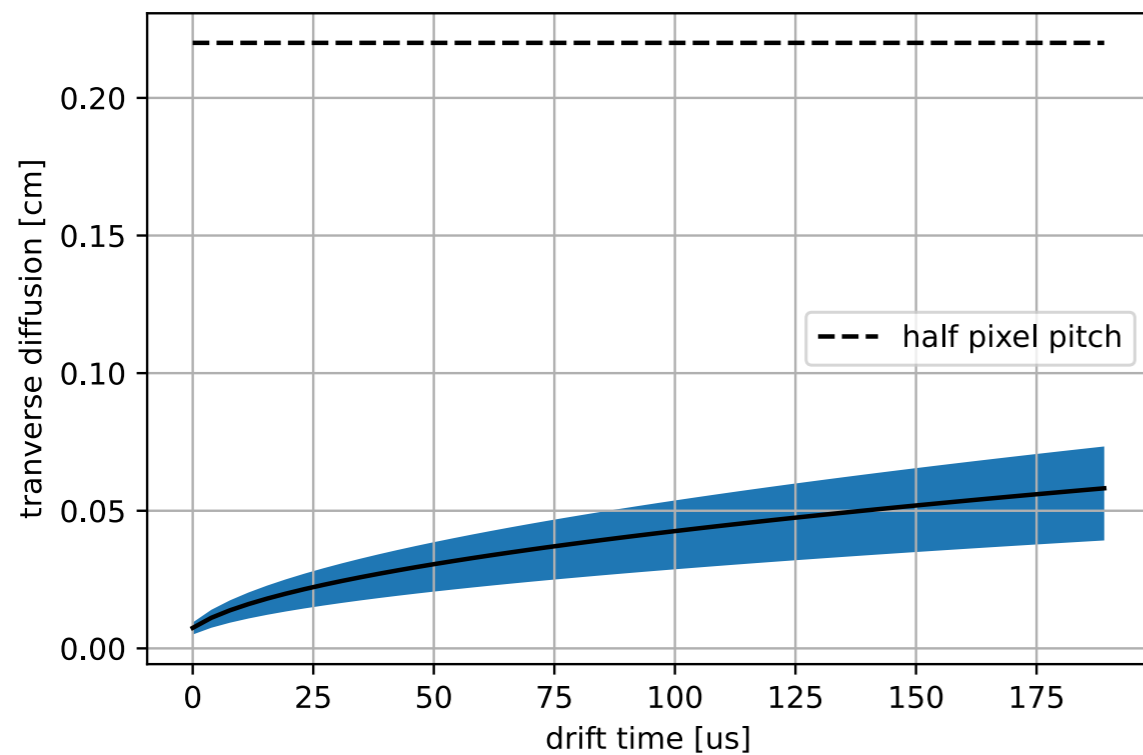


Figuring out the sensitivity and ranges of fitting detector parameters in diff-larnd-sim

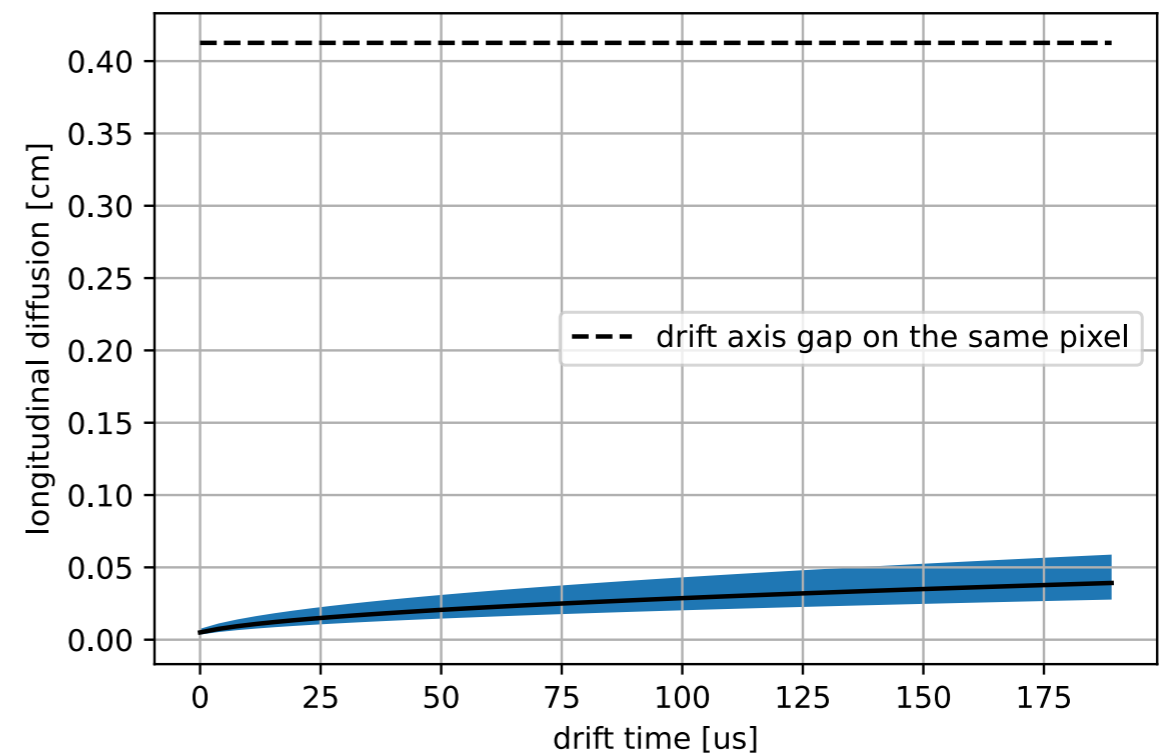
For **eField**, **vdrift**, nothing changes. The fitting ranges will be the prior ranges.

There's not much point fitting diffusion parameters

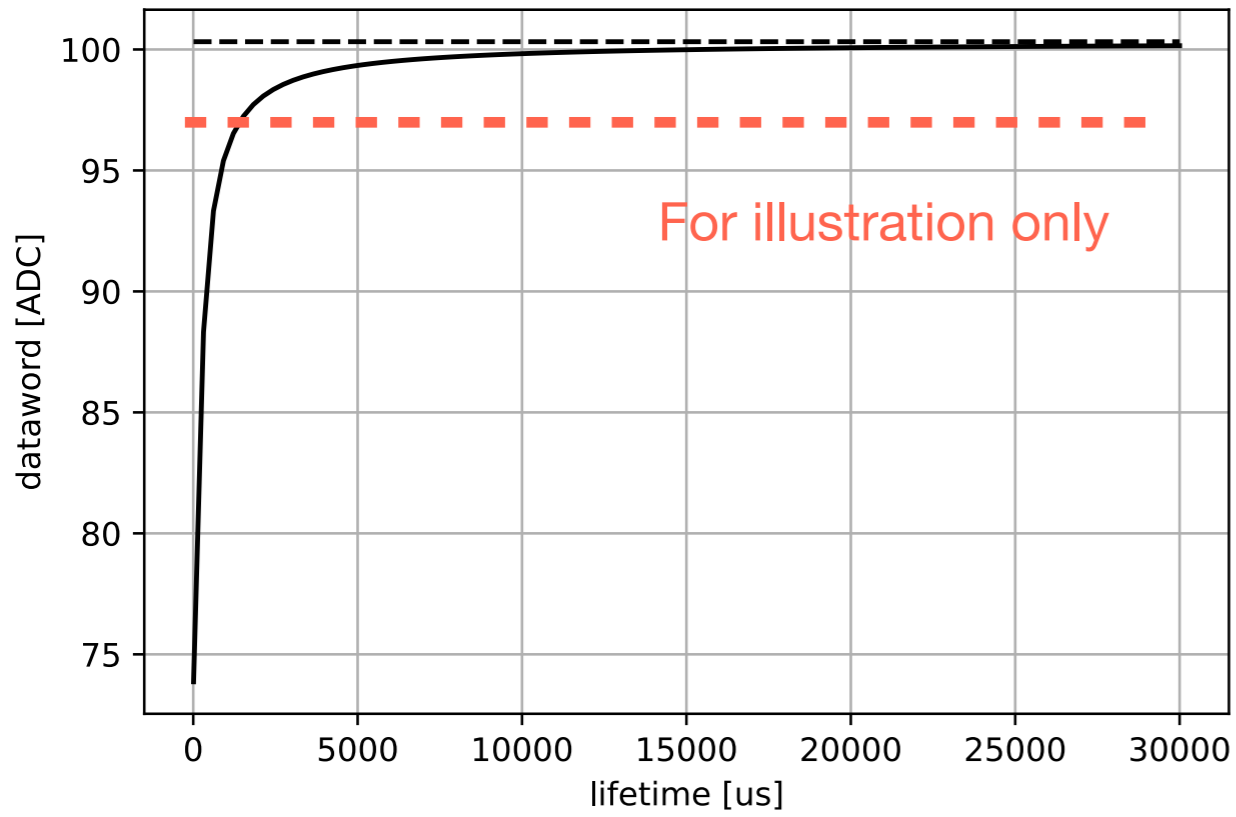
tran_diff



long_diff

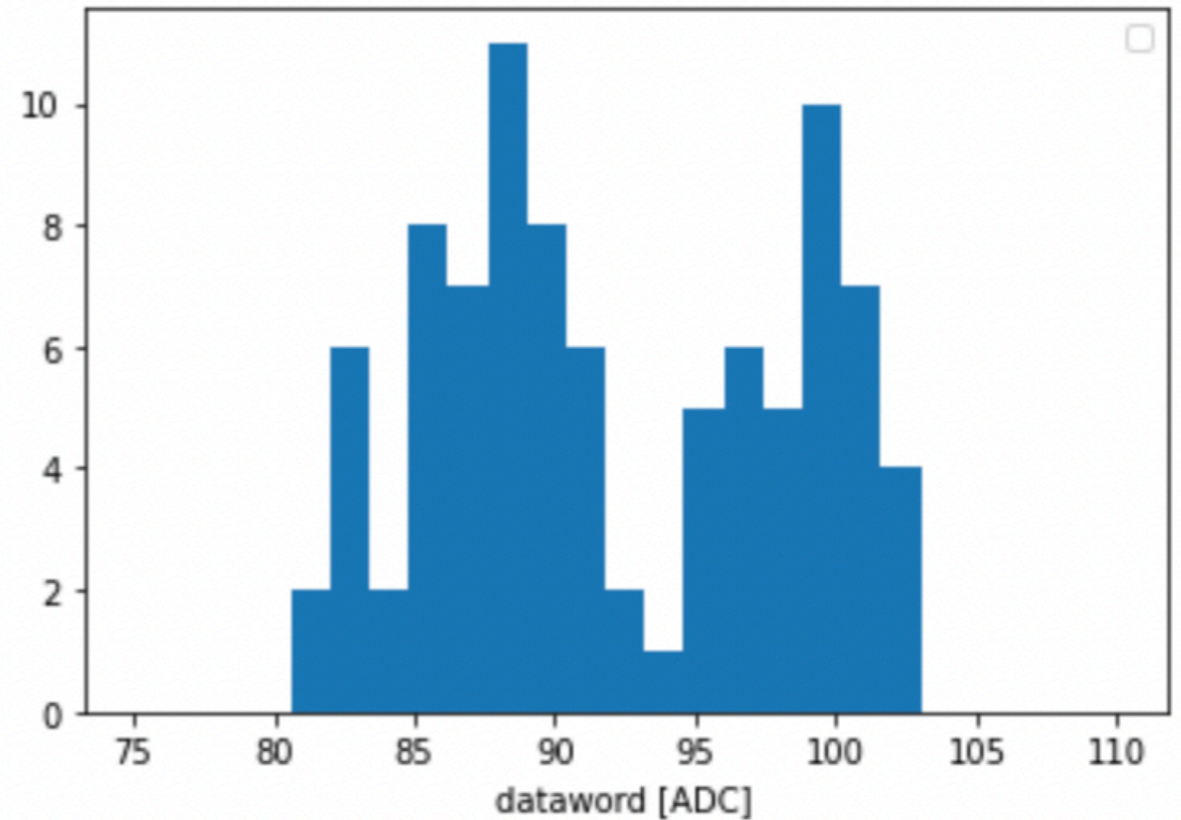
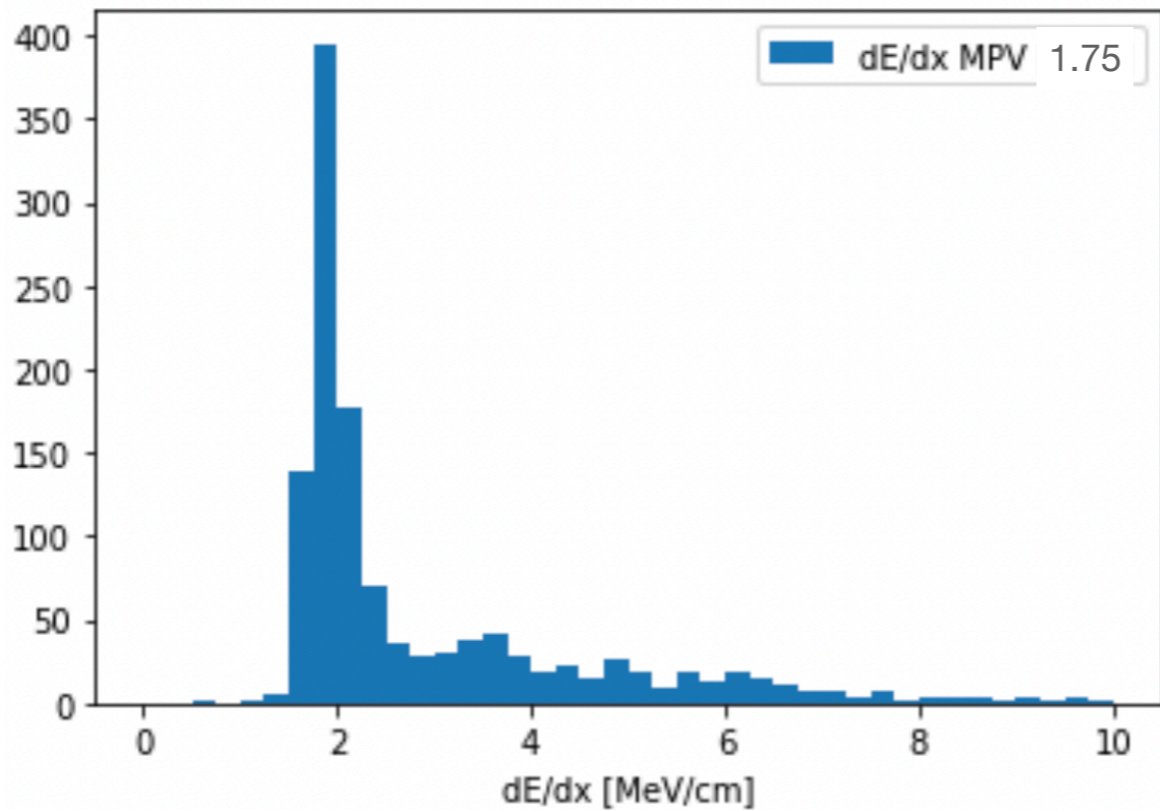


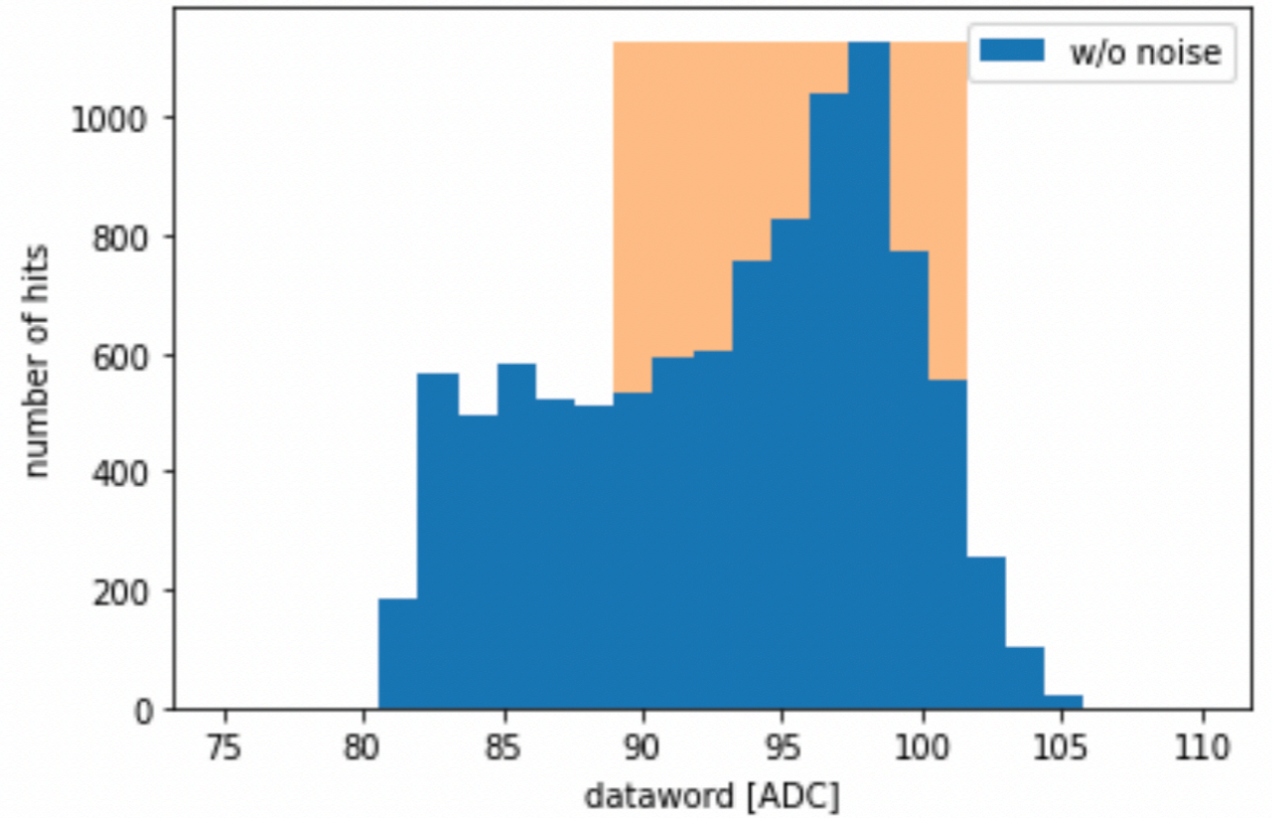
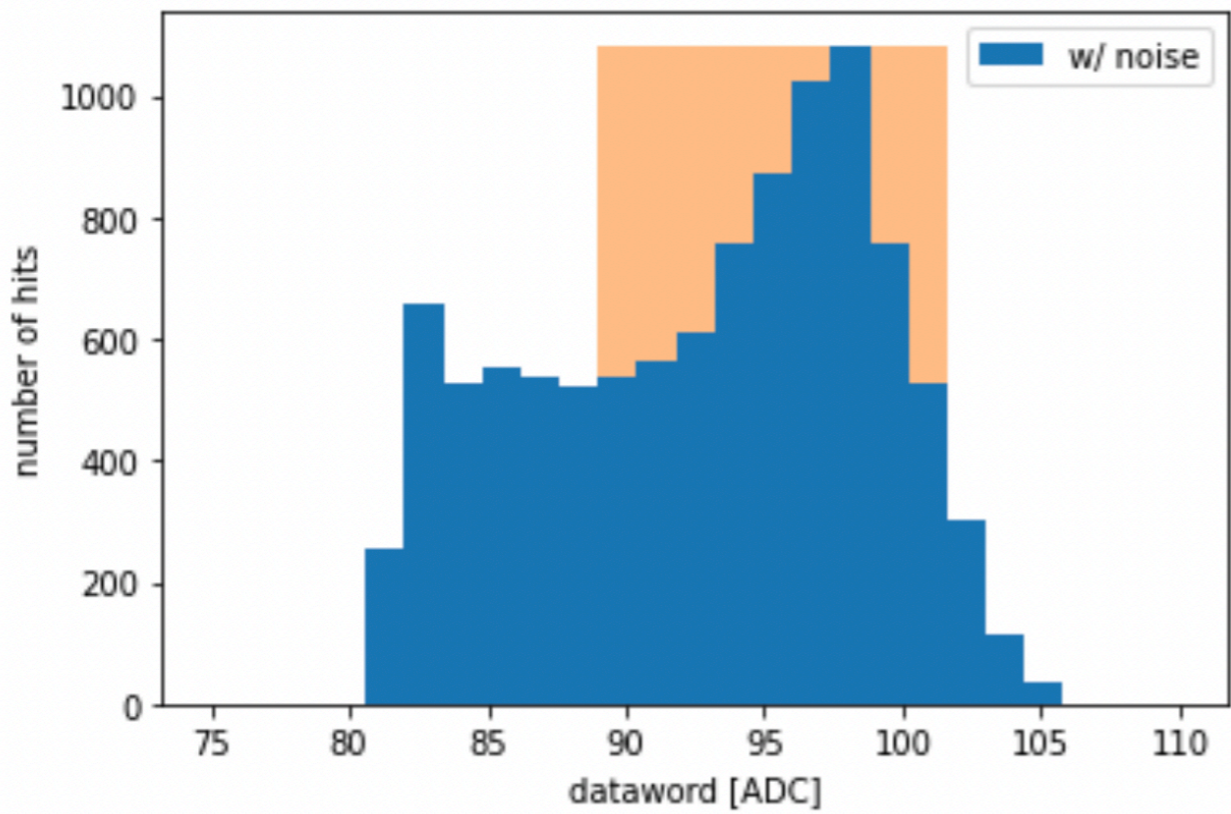
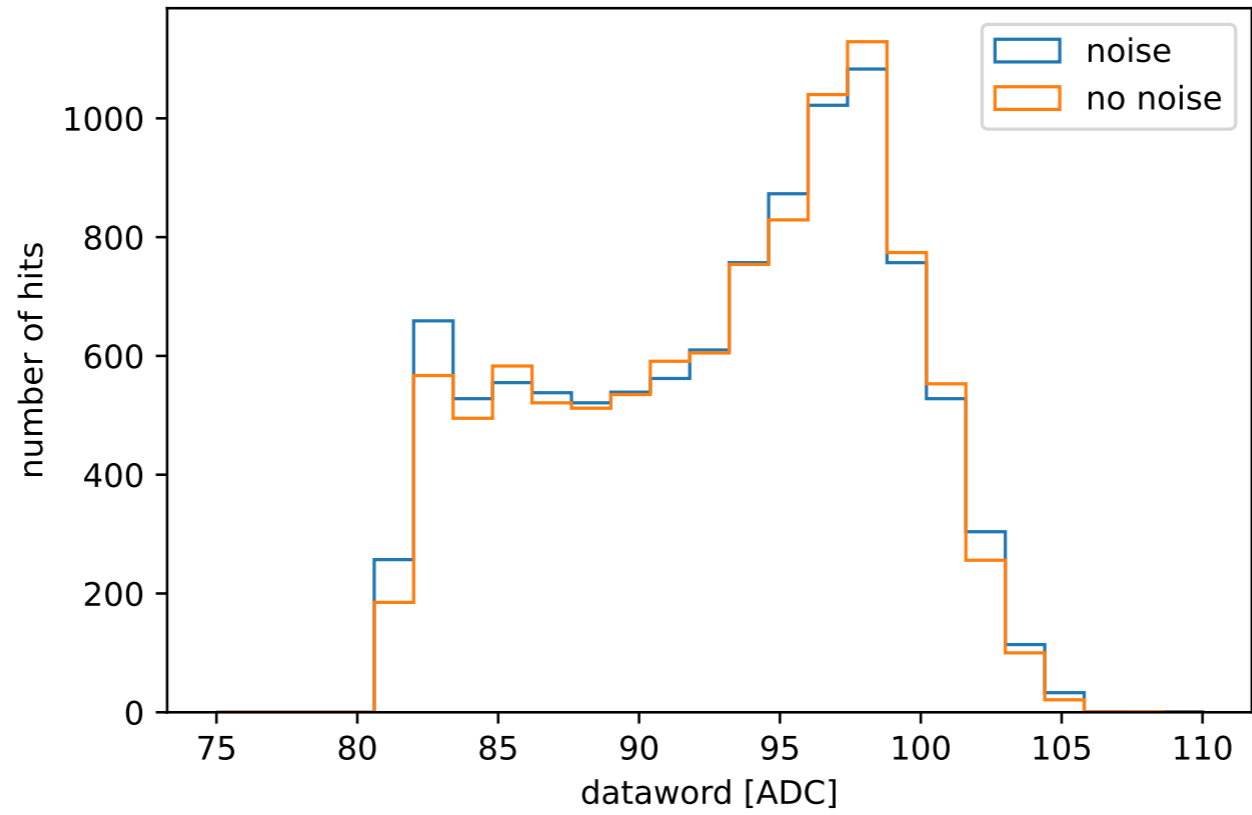
Using lifetime as an example for lifetime and Birks model parameters A_b , k_b



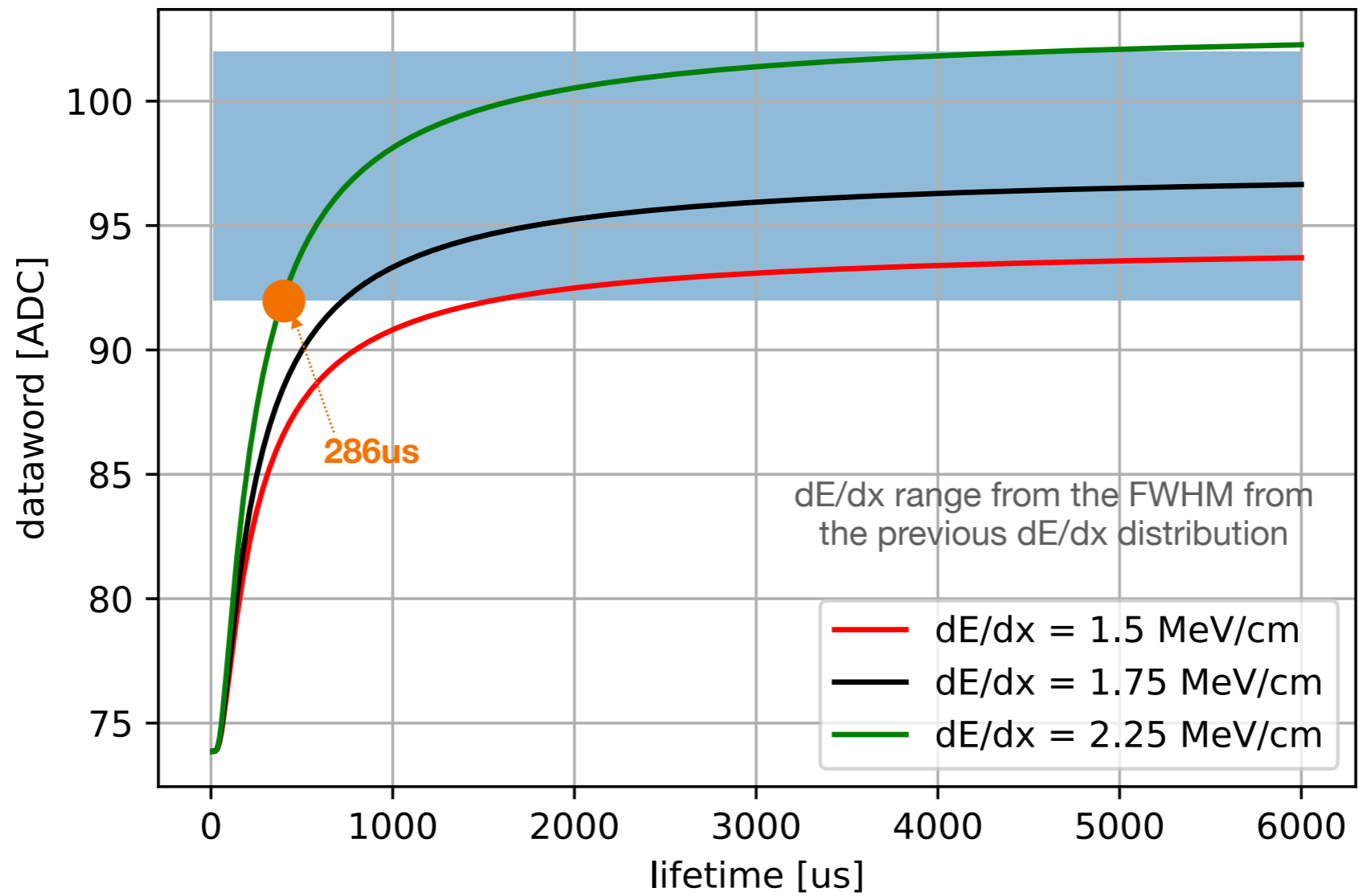
Assume 1.75MeV/cm and the pixel readout (single pitch) at the cathode

Pixel readout given the center piece of muon tracks





Dataword band is from FWHM of the bottom plots



This does not consider the average / batching in the optimizing stage